

Model Code / Additional Spec. Code (No entry if additional spec. code is not specified.)

VM-25S01 /SU0

Setup*1

*1 A PC is required. Setup option includes initial setup of the PC, installation of the software and PC address setting.

Specification

SYSTEM REQUIREMENTS

HARDWARE REQUIREMENTS

| PC/AT compatible personal computer | |
|------------------------------------|---|
| Processor | 1GHz or higher recommended |
| Memory | 1GByte or higher recommended |
| Display | 1280 x 768 or higher –resolution is recommended |
| Hard disk drive | 1GByte of available hard-disk space |
| Drive | CD-ROM drive |
| Network | Ethernet 100BASE-TX |

SOFTWARE REQUIREMENTS

| Category | Model | Edition | Version |
|----------|------------------------------------|------------------------|---------|
| OS | Microsoft® Windows® 7 (32/64bit) | Professional or higher | Any |
| | Microsoft® Windows® 8.1 (32/64bit) | Pro or higher | Any |
| | Microsoft® Windows® 10 (32/64bit) | Pro or higher | Any |
| Others | Microsoft® .NET Framework | — | 4.0 |

CONNECTION

Supported devices : VM-25 Monitor
Number of simultaneous connections : 1 device^{*3}

*3 Connected device can be changed by altering the IP address, if the connection is made via Ethernet.

COMMUNICATION (Ethernet)

Network : Ethernet 100Base-TX
Protocol : TCP/IP

SCREEN

Screen display language : English

DEVICE CONFIGURATION MANAGEMENT

Configuration change : Change monitor type (displacement vibration, velocity vibration or acceleration vibraton)
Paramter change : Parameter setting of vibration measurement (Measurement, Alarm), Recorder output, Relay, Parameter setting such as communication
Adjustment : Gap/Bias voltage value, measurement value, etc
Others : Channel disablement, Time setting, Simulated value setting, Modbus communication setting (Data copy setting, scaling setting)

DISPLAY FUNCTION

MEASUREMENT VALUES

Gap/Bias Voltage Indications, Digital indication of measurement values, Peak measurement values

ALARM STATUS

DANGER alarm, ALERT alarm, OK alarm

OTHER DISPLAY

Time etc.

CONTROL FUNCTIONS

ALARM CONTROL : Alarm reset, Peak-hold reset
BYPASS CONTROL : DANGER bypass, Channel bypass
LED CONTROL : All LEDs on/off

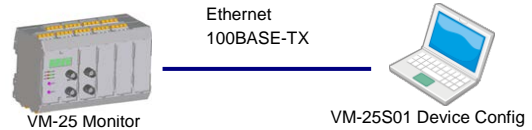
OTHER FUNCTIONS

Password protection : Password authentication on start-up, write configuration to the device and adjust the device.
Firmware update : Update a firmware of VM-25.
Device setting file output : Output a configuration of VM-25 setting as text file

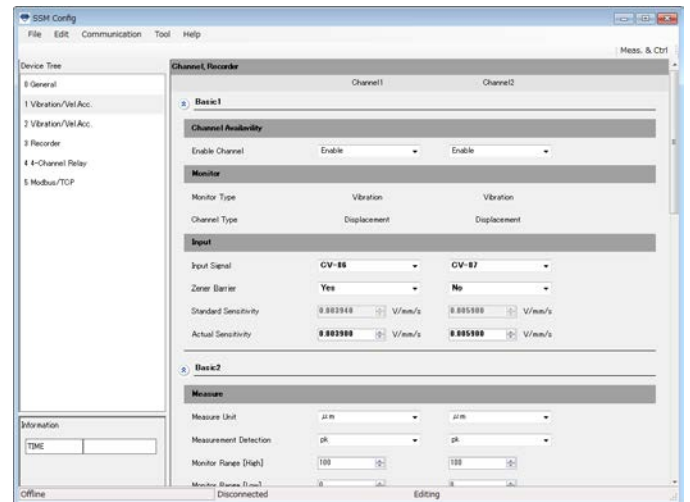
SOFTWARE DISTRIBUTION MEDIA

Media : CD-ROM

SYSTEM CONFIGURATION



Example of Screen



*Actual screens may differ from the images shown in this document

* The specifications and other items indicated herein are subject to change without notice.
* All company and product names in this brochure are trademarks or registered trademarks.