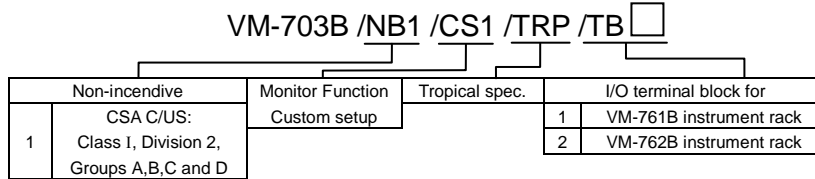


Model Code / Additional Spec. Code (No entry if additional spec, code is not specified.)



Specification

INPUT

Input points (tachometer) : 2 points
 Input points (eccentricity) : 1 point
 Input impedance : Approx. 50kΩ
 (Magnetic pickup input : Approx. 5kΩ)
 Max input voltage range : 100Vp-p
 Hysteresis set value : 1V, 2V, 5V

INPUT TRANSDUCER for TACHOMETER (Only Channel 1 and Channel 2)

Proximity transducer : FK-202F, RD-05A
 Magnetic pickup : MS-160, MS-240
 Input channel : Channel1, Channel2

INPUT TRANSDUCER for ECCENTRICITY (Only Channel 3)

Proximity transducer : FK-202F, FK-302F, VK-202A, VK-202P, VK-302P, VC-020
 Input channel : Channel3

SYNCHRONIZED SIGNAL SOURCE

VM-703B : Channel1 (this module)
 VM-741B : Input via internal mother board(2ch)

OUTPUT

Indicators : OK LED (Green)
 When channel is normal : ON, When alarming : Flashing
 TRG LED (Yellow)
 When rotational pulse is not detected : ON
 When rotational pulse is detected : Flashing

Monitor output : Input signal is output via a buffer amplifier.
 Location : BNC (Front) and connector (Back)
 Output impedance : Approx. 100Ω (Max. 5mA)

Pulse output : Shaped pulse signal is output via a buffer amplifier.
 Location : BNC (Front) and connector (Back)
 Output impedance : Approx. 1kΩ (Max. 5mA)
 Signal level : 0V (V_{OL}), 5V (V_{OH})

Recorder output : Voltage or current output proportional to measurement value.
 Measurement value of each channel can be assigned to any output channel of its own module.
 Number of output points : 4 points
 Output range : 1 to 5V, 4 to 20mA, 0 to 5V, 0 to 10V
 I/O conversion accuracy: ±1% of F.S. at 25°C*1
 ±2% of F.S. at 0°C to 65°C*1
 Max. load resistance : 600Ω (current mode)
 Output impedance : Approx. 500Ω (voltage mode)
 Insulation resistance : 10MΩ at 100VDC
 Burnout function : Downscale 0%
 Downscale 0mA / 0mV

Transducer power supply:
 Proximity transducer : -24VDC / 25mA Max.

Contact output :
 Number of relay : 6 points (logic changeable)
 Contact type : Dry contact (SPDT)
 Energization method : Normally de-energized or Normally energized field changeable
 Contact capacity : 250VAC/5A, 30VDC/5A

Note) *1 At calibrate frequency.(only Eccentricity)

SPEED RELAY (Only Channel 1 and Channel 2)

Speed relay set point : 4 points (HH, H, L, LL), from 0.1rpm to 100% of monitor range, field changeable.
 Speed relay hysteresis : 0 to 100 rpm (1rpm step, field changeable)
 Speed relay mode : Over speed / Under speed
 Speed relay set accuracy : ±1 digit or less (on digital indicator)
 Relay reset : AUTO-RESET or SELF-HOLD field changeable.

ALARM (Only Channel 3)

Alarm set point : Eccentricity (P-P) monitoring
 2 points (DANGER, ALERT),
 from 0 to 100% of monitor range, field changeable
 Eccentricity (Direct) monitoring
 4 points
 (H-DANGER, H-ALERT, L-DANGER, L-ALERT),
 from -50 to +50% of monitor range, field changeable
 Alarm set accuracy : ±(0.2% of F.S.+1digit) or less at 25°C
 Alarm set repeat : ±1digit or less at 25°C
 Alarm delay time : 0 to 99 sec (0.1 sec step, field changeable)
 Alarm reset : AUTO-RESET or SELF-HOLD field changeable.
 Alarm bypass function : Block off alarm output (DANGER)

TACHOMETER

Min. pulse width : 50μsec
 Min. measured frequency : 0.01Hz
 Max. measured frequency : 10kHz
 Input voltage : Less than 100Vp-p

ROTOR SPEED MONITORING

Accuracy : ±(0.003% of rdg. +1digit) at 25°C
 ±(0.03% of rdg. +1digit) at 0°C to 65°C
 Min. display rotation speed*2 : Regardless of the enable or disable the setting, it display until the rotational speed of the lower of the under-speed relay (L, LL).
 No. of input pulse : 1 to 200 pulse/rev.

ROTOR ACCELERATION MONITORING

Accuracy : ±20 digit at 0 to 65°C
 No. of input pulse : 1 to 200 pulse/rev.
 (60 or 120 pulse/rev. is recommended.)

REVERSE ROTATING MONITORING

Accuracy : ±(0.003% of rdg. +1digit) at 25°C
 ±(0.03% of rdg. +1digit) at 0°C to 65°C
 Min. display rotation speed*2 : Regardless of the enable or disable the setting, it display until the rotational speed of the lower of the under-speed relay (L, LL).
 No. of input pulse : 1 to 60 pulse/rev.

Note)*2 Rotational speed below the measurement limit frequency of the monitor can not be set. The rotational speed of the lower limit, can be calculated by the following formula.

$$\text{Rotational speed of the lower limit [rpm]} = 0.01[\text{Hz}] \times 60 \times (\text{Gear ratio} / \text{Pulse number per revolution})$$

Note)

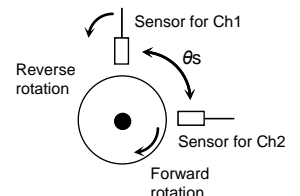
The angle between the sensors shall be as follows :

$$\theta_s = (90 + 360/n) / Z$$

[n=0,1,2,3..., Z:Numbers of the teeth]

θs is recommended to be within 90 to

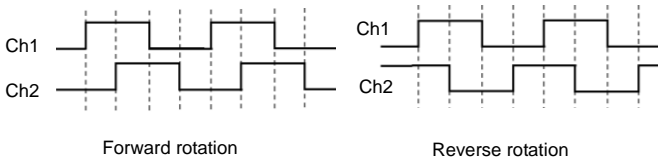
270° and to satisfy the above equation.rotation



Specification

REVERSE ROTATING MONITORING

Note) If there is a key groove of 180° in the attached example of the previous page, the pulse is detected from the axis of rotation as shown in the following figure.



ECCENTRICITY MONITORING

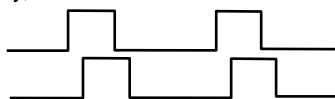
- Phase marker : Selection from three kinds
Ch1 input ,
Phase marker 1 (from VM-741B Phase marker)
Phase marker 2 (from VM-741B Phase marker)
- P-P Monitoring : Accuracy : ±1% of F.S. at 25°C*1
±2% of F.S. at 0°C to 65°C*1
Measure range : 1 to 300rpm, 1 to 600rpm
Output channel : Ch3
- Direct Monitoring : Accuracy : ±1% of F.S. at 25°C
±2% of F.S. at 0°C to 65°C
Measure range : 1Hz or less.
Zero shift function : -50 to +50% of the monitor range.
Output channel : Ch4

Note) *1 At calibrate frequency.

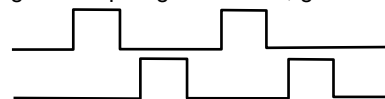
Number of Teeth and Setting Angle θ_s

Number of teeth	Setting Angle θ_s (deg.)								Setting accuracy (deg.)
1	90.0	-----	-----	-----	-----	-----	-----	-----	±30.0
2	225.0	-----	-----	-----	-----	-----	-----	-----	±15.0
3	150.0	270.0	-----	-----	-----	-----	-----	-----	±10.0
4	112.5	202.5	-----	-----	-----	-----	-----	-----	± 7.5
5	90.0	162.0	234.0	-----	-----	-----	-----	-----	± 6.0
6	135.0	195.0	255.0	-----	-----	-----	-----	-----	± 5.0
7	115.7	167.1	218.6	270.0	-----	-----	-----	-----	± 4.3
8	101.3	146.3	191.3	236.3	-----	-----	-----	-----	± 3.8
9	90.0	130.0	170.0	210.0	250.0	-----	-----	-----	± 3.3
10	117.0	153.0	189.0	225.0	261.0	-----	-----	-----	± 3.0
11	106.4	139.1	171.8	204.5	237.3	270.0	-----	-----	± 2.7
12	97.5	127.5	157.5	187.5	217.5	247.5	-----	-----	± 2.5
13	90.0	117.7	145.4	173.1	200.8	228.5	256.2	-----	± 2.3
14	109.3	135.0	160.7	186.4	212.1	237.9	263.6	-----	± 2.1
15	102.0	126.0	150.0	174.0	198.0	222.0	246.0	270.0	± 2.0
16	95.6	118.1	140.6	163.1	185.6	208.1	230.6	253.1	± 1.9
20	94.5	112.5	130.5	148.5	166.5	184.5	202.5	220.5	± 1.5
	238.5	256.5	-----	-----	-----	-----	-----	-----	
30	99.0	111.0	123.0	135.0	147.0	159.0	171.0	183.0	± 1.0
	195.0	207.0	219.0	231.0	243.0	255.0	267.0	-----	
36	92.5	102.5	112.5	122.5	132.5	142.5	152.5	162.5	± 0.8
	172.5	+10.0 step						262.5	
40	92.3	101.3	110.3	119.3	128.3	137.3	146.3	155.3	± 0.8
	164.3	+9.0 step						263.3	
60	91.5	97.5	103.5	109.5	115.5	121.5	127.5	133.5	± 0.5
	139.5	+6.0 step						265.5	

- Note) *3 The above setting angle θ_s is selected to satisfy $\theta_s=(90+360n)/Z$ and to be within $90 \leq \theta_s \leq 270$.
 *4 The setting accuracy of the setting angle θ_s shall be $\pm 30.0/Z$.
 *5 For gears not listed in the table above, calculate the setting angle referring to *3, *4.
 *6 The pulses of both channels inputted should be overlapped to judge the direction of the rotation. Especially, when the number of the teeth is small or an irregular shaped gear is used, great caution is necessary.



Acceptable



Not Acceptable

Specification

ENVIRONMENTAL CONDITION

Operating temperature : 0 to +65°C
 Operating temperature at explosion proof construction : 0 to +60°C
 Storage temperature : -30 to +85°C
 Relative humidity : 20 to 95%RH (non-condensing)

POWER CONSUMPTION

Module : Less than 15W

MATERIAL AND FINISH

Face plate : ABS (Black)
 Sheet : Polyester tough top (Gray)
 Base plate : Aluminium alloy (Silver)

MASS

Body : Max. 1.0kg (2.2lb)

ACCESSORY SPECIFICATION CODE / IDENTIFIED BY TB□

Code	Accessory	Quantity (Part Code)
/TB1	Transducer input terminal block plug (15pin) FRONT-MC-1.5/15-STF-3.81 (PHOENIX CONTACT)	1piece (7072NAB)
	Recorder output terminal block plug (6pin) FRONT-MC-1.5/6-STF-3.81 (PHOENIX CONTACT)	2pieces *8 (7072NAC)
	Contact output terminal block plug (18pin) FRONT-MC-1.5/18-STF-3.81 (PHOENIX CONTACT)	1piece (7072NAA)
/TB2	Contact output terminal block plug (18pin) FRONT-MC-1.5/18-STF-3.81 (PHOENIX CONTACT)	1piece (7072NAA)

Note) *7 D-sub plugs and hoods are not included in this code. Please make necessary arrangement separately, if required.

*8 When individually ordering specify the parts code, it is require to arrange for a necessary amount.



WARNING

Some functions may not be available with old version.
 For details, please refer to "infiSYS Family Improvement Information" (6H16-011).

Default Value

INPUT (Tachometer)

Monitoring : Tachometer
 Monitor range : 0 to 5000rpm
 Input sensor : FK-202F (non-intrinsic safety)
 Input points : 2 points
 Input impedance : 50kΩ
 Input pulsepoints : 60 pulse/rev
 Input speed / indicated speed changed ratio : 1

INPUT (Eccentricity P-P)

Monitor range : 0 to 100μm
 Input sensor : FK-202F (non-intrinsic safety)
 Input impedance : 50kΩ
 Measure range : 1 to 600rpm
 Phase marker : Ch1 (this module)

INPUT (Eccentricity Direct)

Monitor range : -50 to +50μm
 Polarity : Direct

WAVE SHAPE (Tachometer)

Trigger mode : AUTO
 Hysteresis set value : 1V

PULSEOUTPUT (Tachometer)

Output channel : Ch1

SPEED RELAY SET (Tachometer)

HH set point : 3600rpm (Over speed)
 H set point : 3000rpm (Over speed)
 L set point : 10rpm (Under speed)
 LL set point : 10rpm (Under speed)
 Speed relay hysteresis : 10rpm
 Reset : AUTO-RESET

OK ALARM (Tachometer)

OK set point : -1.4V (Low)
 Reset : AUTO-RESET

OK ALARM (Eccentricity)

OK set point : -1.4V (Low), -18.8V (High)
 Reset : AUTO-RESET

ALARM (Eccentricity P-P)

DANGER set point : 80μm
 ALERT set point : 60μm
 Alarm delay time : 3sec (DANGER, ALERT)
 Alarm reset : AUTO-RESET

ALARM (Eccentricity Direct)

Set point : Not used

RECORDER OUTPUT

Output range : 4 to 20mA
 (4mA at the burnout)

CONTACT

Contact (RELAY1) : HH-1 (tachometer)
 Contact (RELAY2) : H-1 (tachometer)
 Contact (RELAY3) : L-1 (tachometer)
 Contact (RELAY4) : LL-1 (tachometer)
 Contact (RELAY5) : DANGER-3 (Eccentricity P-P)
 Contact (RELAY6) : ALERT-3 (Eccentricity P-P)
 Energization method : Normally de-energized

OTHERS

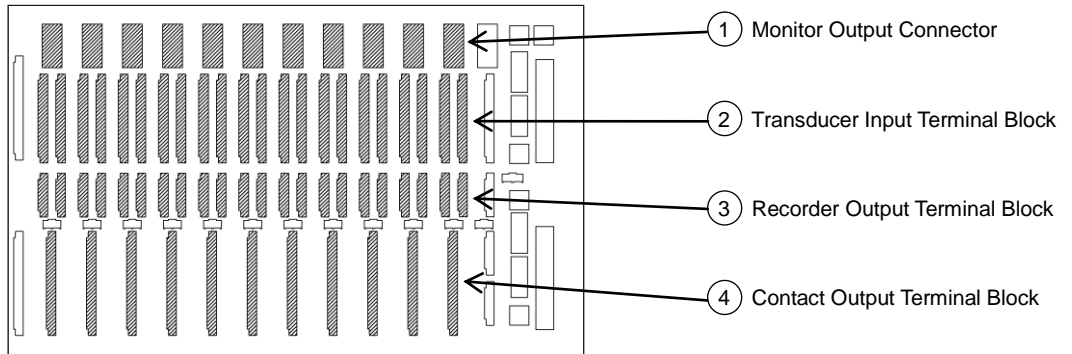
Suppression set value : 0% (Only eccentricity P-P)
 First out : OFF
 Timed OK channel defeat : ON
 Burnout : Downscale 0%

Alarm Contact Operation

Contact type	Energization method	Power OFF	Power ON	
			Normal state	Alarm state
N.O. contact	NORMALLY DE-ENERGIZED	OPEN	OPEN	CLOSE
	NORMALLY ENERGIZED	OPEN	CLOSE	OPEN
N.C. contact	NORMALLY DE-ENERGIZED	CLOSE	CLOSE	OPEN
	NORMALLY ENERGIZED	CLOSE	OPEN	CLOSE

Plug/ Terminal Block (Connector) Pin Assignment

VM-761B Instrument Rack
(Back)



	Back of Instrument Rack	Plug/ Terminal Block (Connector) Pin Assignment	Fitting Plug	Part Code																																																												
①		<table border="1"> <tr><td>1</td><td>CH1 MON</td><td>6</td><td>CH3 MON</td></tr> <tr><td>2</td><td>CH1 COM</td><td>7</td><td>CH3 COM</td></tr> <tr><td>3</td><td>CH2 MON</td><td>8</td><td>PUL</td></tr> <tr><td>4</td><td>CH2 COM</td><td>9</td><td>COM</td></tr> <tr><td>5</td><td>N/A</td><td></td><td></td></tr> </table>	1	CH1 MON	6	CH3 MON	2	CH1 COM	7	CH3 COM	3	CH2 MON	8	PUL	4	CH2 COM	9	COM	5	N/A				Plug 7072NAD Hood 7072NAG																																								
1	CH1 MON	6	CH3 MON																																																													
2	CH1 COM	7	CH3 COM																																																													
3	CH2 MON	8	PUL																																																													
4	CH2 COM	9	COM																																																													
5	N/A																																																															
②		<table border="1"> <tr><td>A1</td><td>CH1 SIG</td><td>B1</td><td>N/A</td></tr> <tr><td>A2</td><td>CH1 COM</td><td>B2</td><td>N/A</td></tr> <tr><td>A3</td><td>N/A</td><td>B3</td><td>N/A</td></tr> <tr><td>A4</td><td>CH1 POW</td><td>B4</td><td>N/A</td></tr> <tr><td>A5</td><td>CH1 SHIELD</td><td>B5</td><td>N/A</td></tr> <tr><td>A6</td><td>CH2 SIG</td><td>B6</td><td>N/A</td></tr> <tr><td>A7</td><td>CH2 COM</td><td>B7</td><td>N/A</td></tr> <tr><td>A8</td><td>N/A</td><td>B8</td><td>N/A</td></tr> <tr><td>A9</td><td>CH2 POW</td><td>B9</td><td>N/A</td></tr> <tr><td>A10</td><td>CH2 SHIELD</td><td>B10</td><td>N/A</td></tr> <tr><td>A11</td><td>CH3 SIG</td><td>B11</td><td>N/A</td></tr> <tr><td>A12</td><td>CH3 COM</td><td>B12</td><td>N/A</td></tr> <tr><td>A13</td><td>N/A</td><td>B13</td><td>N/A</td></tr> <tr><td>A14</td><td>CH3 POW</td><td>B14</td><td>N/A</td></tr> <tr><td>A15</td><td>CH3 SHIELD</td><td>B15</td><td>N/A</td></tr> </table>	A1	CH1 SIG	B1	N/A	A2	CH1 COM	B2	N/A	A3	N/A	B3	N/A	A4	CH1 POW	B4	N/A	A5	CH1 SHIELD	B5	N/A	A6	CH2 SIG	B6	N/A	A7	CH2 COM	B7	N/A	A8	N/A	B8	N/A	A9	CH2 POW	B9	N/A	A10	CH2 SHIELD	B10	N/A	A11	CH3 SIG	B11	N/A	A12	CH3 COM	B12	N/A	A13	N/A	B13	N/A	A14	CH3 POW	B14	N/A	A15	CH3 SHIELD	B15	N/A		Note2) 7072NAB
A1	CH1 SIG	B1	N/A																																																													
A2	CH1 COM	B2	N/A																																																													
A3	N/A	B3	N/A																																																													
A4	CH1 POW	B4	N/A																																																													
A5	CH1 SHIELD	B5	N/A																																																													
A6	CH2 SIG	B6	N/A																																																													
A7	CH2 COM	B7	N/A																																																													
A8	N/A	B8	N/A																																																													
A9	CH2 POW	B9	N/A																																																													
A10	CH2 SHIELD	B10	N/A																																																													
A11	CH3 SIG	B11	N/A																																																													
A12	CH3 COM	B12	N/A																																																													
A13	N/A	B13	N/A																																																													
A14	CH3 POW	B14	N/A																																																													
A15	CH3 SHIELD	B15	N/A																																																													
③		<table border="1"> <tr><td>C1</td><td>REC1 +</td><td>D1</td><td>REC4 +</td></tr> <tr><td>C2</td><td>REC1 -</td><td>D2</td><td>REC4 -</td></tr> <tr><td>C3</td><td>REC2 +</td><td>D3</td><td>N/A</td></tr> <tr><td>C4</td><td>REC2 -</td><td>D4</td><td>N/A</td></tr> <tr><td>C5</td><td>REC3 +</td><td>D5</td><td>N/A</td></tr> <tr><td>C6</td><td>REC3 -</td><td>D6</td><td>N/A</td></tr> </table>	C1	REC1 +	D1	REC4 +	C2	REC1 -	D2	REC4 -	C3	REC2 +	D3	N/A	C4	REC2 -	D4	N/A	C5	REC3 +	D5	N/A	C6	REC3 -	D6	N/A		7072NAC																																				
C1	REC1 +	D1	REC4 +																																																													
C2	REC1 -	D2	REC4 -																																																													
C3	REC2 +	D3	N/A																																																													
C4	REC2 -	D4	N/A																																																													
C5	REC3 +	D5	N/A																																																													
C6	REC3 -	D6	N/A																																																													
④		<table border="1"> <tr><td>E1</td><td>RL1 N.O.</td><td>E10</td><td>RL4 N.O.</td></tr> <tr><td>E2</td><td>RL1 COM</td><td>E11</td><td>RL4 COM</td></tr> <tr><td>E3</td><td>RL1 N.C.</td><td>E12</td><td>RL4 N.C.</td></tr> <tr><td>E4</td><td>RL2 N.O.</td><td>E13</td><td>RL5 N.O.</td></tr> <tr><td>E5</td><td>RL2 COM</td><td>E14</td><td>RL5 COM</td></tr> <tr><td>E6</td><td>RL2 N.C.</td><td>E15</td><td>RL5 N.C.</td></tr> <tr><td>E7</td><td>RL3 N.O.</td><td>E16</td><td>RL6 N.O.</td></tr> <tr><td>E8</td><td>RL3 COM</td><td>E17</td><td>RL6 COM</td></tr> <tr><td>E9</td><td>RL3 N.C.</td><td>E18</td><td>RL6 N.C.</td></tr> </table>	E1	RL1 N.O.	E10	RL4 N.O.	E2	RL1 COM	E11	RL4 COM	E3	RL1 N.C.	E12	RL4 N.C.	E4	RL2 N.O.	E13	RL5 N.O.	E5	RL2 COM	E14	RL5 COM	E6	RL2 N.C.	E15	RL5 N.C.	E7	RL3 N.O.	E16	RL6 N.O.	E8	RL3 COM	E17	RL6 COM	E9	RL3 N.C.	E18	RL6 N.C.		7072NAA																								
E1	RL1 N.O.	E10	RL4 N.O.																																																													
E2	RL1 COM	E11	RL4 COM																																																													
E3	RL1 N.C.	E12	RL4 N.C.																																																													
E4	RL2 N.O.	E13	RL5 N.O.																																																													
E5	RL2 COM	E14	RL5 COM																																																													
E6	RL2 N.C.	E15	RL5 N.C.																																																													
E7	RL3 N.O.	E16	RL6 N.O.																																																													
E8	RL3 COM	E17	RL6 COM																																																													
E9	RL3 N.C.	E18	RL6 N.C.																																																													

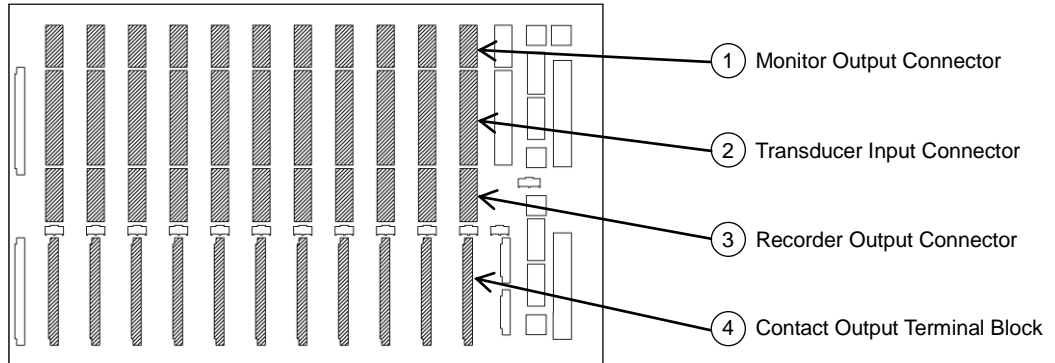
Note1) For the accessory specification code "/TB1", the fitting terminal block plugs ② ③ ④ are included.

For the accessory specification code "/TB1", the D-sub plug and hood ① are not included. If required, please make necessary arrangement separately referring to the part code above.

Note2) When individually ordering specify the parts code, it is require to arrange for a necessary amount.

Plug/ Terminal Block (Connector) Pin Assignment

VM-762B Instrument Rack
(Back)



	Back of Instrument Rack	Plug/ Terminal Block (Connector) Pin Assignment	Fitting Plug	Part Code																																																																												
①		<table border="1"> <tr><td>1</td><td>CH1 MON</td><td>6</td><td>CH3 MON</td></tr> <tr><td>2</td><td>CH1 COM</td><td>7</td><td>CH3 COM</td></tr> <tr><td>3</td><td>CH2 MON</td><td>8</td><td>PUL</td></tr> <tr><td>4</td><td>CH2 COM</td><td>9</td><td>COM</td></tr> <tr><td>5</td><td>N/A</td><td></td><td></td></tr> </table>	1	CH1 MON	6	CH3 MON	2	CH1 COM	7	CH3 COM	3	CH2 MON	8	PUL	4	CH2 COM	9	COM	5	N/A				Plug 7072NAD Hood 7072NAG																																																								
1	CH1 MON	6	CH3 MON																																																																													
2	CH1 COM	7	CH3 COM																																																																													
3	CH2 MON	8	PUL																																																																													
4	CH2 COM	9	COM																																																																													
5	N/A																																																																															
②		<table border="1"> <tr><td>A1</td><td>CH1 IN</td><td>A20</td><td>N/A</td></tr> <tr><td>A2</td><td>CH1 COM</td><td>A21</td><td>N/A</td></tr> <tr><td>A3</td><td>N/A</td><td>A22</td><td>N/A</td></tr> <tr><td>A4</td><td>CH1 POW</td><td>A23</td><td>N/A</td></tr> <tr><td>A5</td><td>CH1 SLD</td><td>A24</td><td>N/A</td></tr> <tr><td>A6</td><td>CH2 IN</td><td>A25</td><td>N/A</td></tr> <tr><td>A7</td><td>CH2 COM</td><td>A26</td><td>N/A</td></tr> <tr><td>A8</td><td>N/A</td><td>A27</td><td>N/A</td></tr> <tr><td>A9</td><td>CH2 POW</td><td>A28</td><td>N/A</td></tr> <tr><td>A10</td><td>CH2 SLD</td><td>A29</td><td>N/A</td></tr> <tr><td>A11</td><td>CH3 IN</td><td>A30</td><td>N/A</td></tr> <tr><td>A12</td><td>CH3 COM</td><td>A31</td><td>N/A</td></tr> <tr><td>A13</td><td>N/A</td><td>A32</td><td>N/A</td></tr> <tr><td>A14</td><td>CH3 POW</td><td>A33</td><td>N/A</td></tr> <tr><td>A15</td><td>CH3 SLD</td><td>A34</td><td>N/A</td></tr> <tr><td>A16</td><td>N/A</td><td>A35</td><td>N/A</td></tr> <tr><td>A17</td><td>N/A</td><td>A36</td><td>N/A</td></tr> <tr><td>A18</td><td>N/A</td><td>A37</td><td>N/A</td></tr> <tr><td>A19</td><td>N/A</td><td></td><td></td></tr> </table>	A1	CH1 IN	A20	N/A	A2	CH1 COM	A21	N/A	A3	N/A	A22	N/A	A4	CH1 POW	A23	N/A	A5	CH1 SLD	A24	N/A	A6	CH2 IN	A25	N/A	A7	CH2 COM	A26	N/A	A8	N/A	A27	N/A	A9	CH2 POW	A28	N/A	A10	CH2 SLD	A29	N/A	A11	CH3 IN	A30	N/A	A12	CH3 COM	A31	N/A	A13	N/A	A32	N/A	A14	CH3 POW	A33	N/A	A15	CH3 SLD	A34	N/A	A16	N/A	A35	N/A	A17	N/A	A36	N/A	A18	N/A	A37	N/A	A19	N/A				Plug 7072NAF Hood 7072NAJ
A1	CH1 IN	A20	N/A																																																																													
A2	CH1 COM	A21	N/A																																																																													
A3	N/A	A22	N/A																																																																													
A4	CH1 POW	A23	N/A																																																																													
A5	CH1 SLD	A24	N/A																																																																													
A6	CH2 IN	A25	N/A																																																																													
A7	CH2 COM	A26	N/A																																																																													
A8	N/A	A27	N/A																																																																													
A9	CH2 POW	A28	N/A																																																																													
A10	CH2 SLD	A29	N/A																																																																													
A11	CH3 IN	A30	N/A																																																																													
A12	CH3 COM	A31	N/A																																																																													
A13	N/A	A32	N/A																																																																													
A14	CH3 POW	A33	N/A																																																																													
A15	CH3 SLD	A34	N/A																																																																													
A16	N/A	A35	N/A																																																																													
A17	N/A	A36	N/A																																																																													
A18	N/A	A37	N/A																																																																													
A19	N/A																																																																															
③		<table border="1"> <tr><td>C1</td><td>REC1 +</td><td>C9</td><td>REC4 +</td></tr> <tr><td>C2</td><td>REC1 -</td><td>C10</td><td>REC4 -</td></tr> <tr><td>C3</td><td>REC2 +</td><td>C11</td><td>N/A</td></tr> <tr><td>C4</td><td>REC2 -</td><td>C12</td><td>N/A</td></tr> <tr><td>C5</td><td>REC3 +</td><td>C13</td><td>N/A</td></tr> <tr><td>C6</td><td>REC3 -</td><td>C14</td><td>N/A</td></tr> <tr><td>C7</td><td>N/A</td><td>C15</td><td>N/A</td></tr> <tr><td>C8</td><td>N/A</td><td></td><td></td></tr> </table>	C1	REC1 +	C9	REC4 +	C2	REC1 -	C10	REC4 -	C3	REC2 +	C11	N/A	C4	REC2 -	C12	N/A	C5	REC3 +	C13	N/A	C6	REC3 -	C14	N/A	C7	N/A	C15	N/A	C8	N/A				Plug 7072NAE Hood 7072NAH																																												
C1	REC1 +	C9	REC4 +																																																																													
C2	REC1 -	C10	REC4 -																																																																													
C3	REC2 +	C11	N/A																																																																													
C4	REC2 -	C12	N/A																																																																													
C5	REC3 +	C13	N/A																																																																													
C6	REC3 -	C14	N/A																																																																													
C7	N/A	C15	N/A																																																																													
C8	N/A																																																																															
④		<table border="1"> <tr><td>E1</td><td>RL1 N.O.</td><td>E10</td><td>RL4 N.O.</td></tr> <tr><td>E2</td><td>RL1 COM</td><td>E11</td><td>RL4 COM</td></tr> <tr><td>E3</td><td>RL1 N.C.</td><td>E12</td><td>RL4 N.C.</td></tr> <tr><td>E4</td><td>RL2 N.O.</td><td>E13</td><td>RL5 N.O.</td></tr> <tr><td>E5</td><td>RL2 COM</td><td>E14</td><td>RL5 COM</td></tr> <tr><td>E6</td><td>RL2 N.C.</td><td>E15</td><td>RL5 N.C.</td></tr> <tr><td>E7</td><td>RL3 N.O.</td><td>E16</td><td>RL6 N.O.</td></tr> <tr><td>E8</td><td>RL3 COM</td><td>E17</td><td>RL6 COM</td></tr> <tr><td>E9</td><td>RL3 N.C.</td><td>E18</td><td>RL6 N.C.</td></tr> </table>	E1	RL1 N.O.	E10	RL4 N.O.	E2	RL1 COM	E11	RL4 COM	E3	RL1 N.C.	E12	RL4 N.C.	E4	RL2 N.O.	E13	RL5 N.O.	E5	RL2 COM	E14	RL5 COM	E6	RL2 N.C.	E15	RL5 N.C.	E7	RL3 N.O.	E16	RL6 N.O.	E8	RL3 COM	E17	RL6 COM	E9	RL3 N.C.	E18	RL6 N.C.		7072NAA																																								
E1	RL1 N.O.	E10	RL4 N.O.																																																																													
E2	RL1 COM	E11	RL4 COM																																																																													
E3	RL1 N.C.	E12	RL4 N.C.																																																																													
E4	RL2 N.O.	E13	RL5 N.O.																																																																													
E5	RL2 COM	E14	RL5 COM																																																																													
E6	RL2 N.C.	E15	RL5 N.C.																																																																													
E7	RL3 N.O.	E16	RL6 N.O.																																																																													
E8	RL3 COM	E17	RL6 COM																																																																													
E9	RL3 N.C.	E18	RL6 N.C.																																																																													

Note) For the accessory specification code "TB2", the fitting terminal block plug ④ is included.
For the accessory specification code "TB2", the D-sub plugs and hoods ① ② ③ are not included. If required, please make necessary arrangement separately referring to the part code above.